



STEELER

SOKÓŁKA

www.steeler.pl

MITSUBISHI ASX



FITTING INSTRUCTION

(Side bullbar)

ASX-R1060-R

ASX-R1076-PR-01

ASX-R1070-PR-02



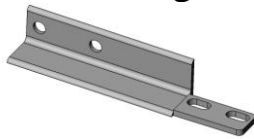
Bullbar with homologation „e”

Specification of full assembly (right side):

- 1.** Side step / Step with chamfer /
Step with plastic sill (2 pcs.) Left + Right



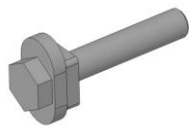
- 2.** Attachment I (2 pcs.)
Left + Right



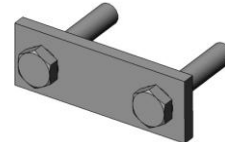
- 3.** Attachment II (2 pcs.)
Left + Right



- 4.** Skewer M12x50 (2 pcs.)



- 5.** Skewer M10x50 (2 pcs.)



Connecting components:

Screws:

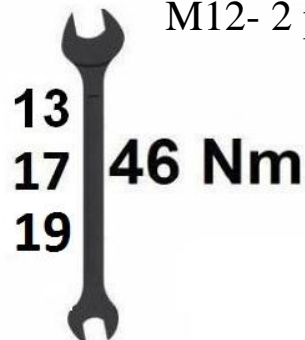
M8x25- 8 pcs.
M10x50- 2 pcs. (skewer)
M12x50- 2 pcs. (skewer)

Washers:

Ø8,5- 8 pcs. (large washer)
Ø11- 4 pcs. (large washer)
Ø13- 2 pcs. (large washer)

Nuts:

M8- 8 pcs.
M10- 4 pcs.
M12- 2 pcs.





Fitting time:



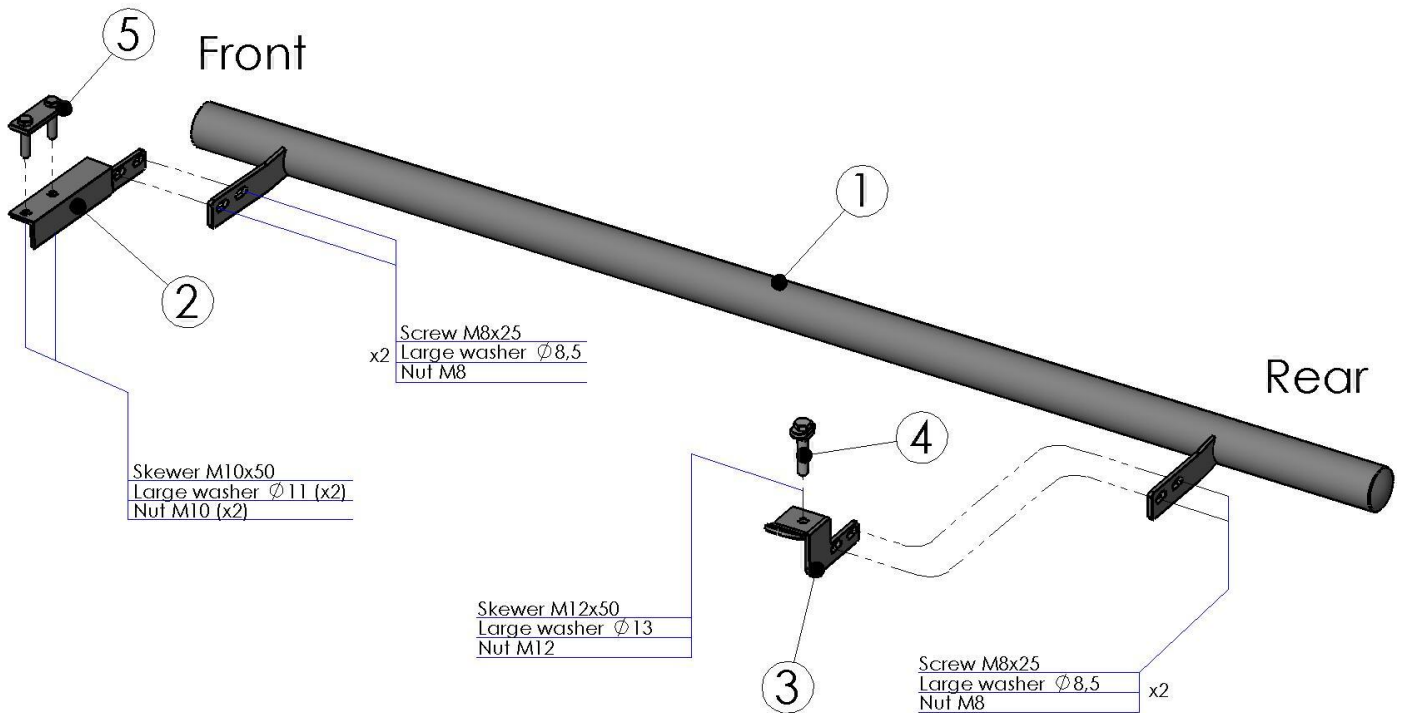
1 h

ATTENTION: *Foil remove after fitting !*

Bullbar fitting:

(Left step fitting must be done in mirror reflection)

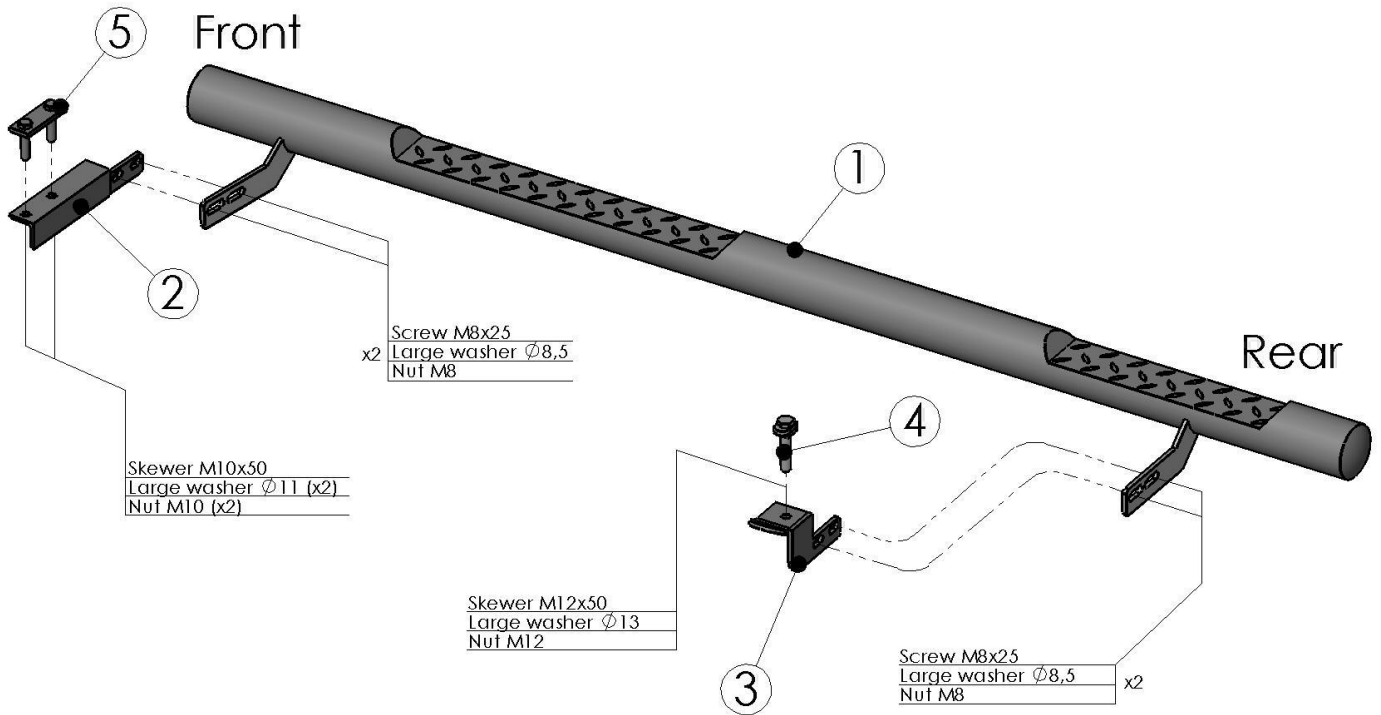
ASX-R1060-R



Bullbar fitting:

(Left step fitting must be done in mirror reflection)

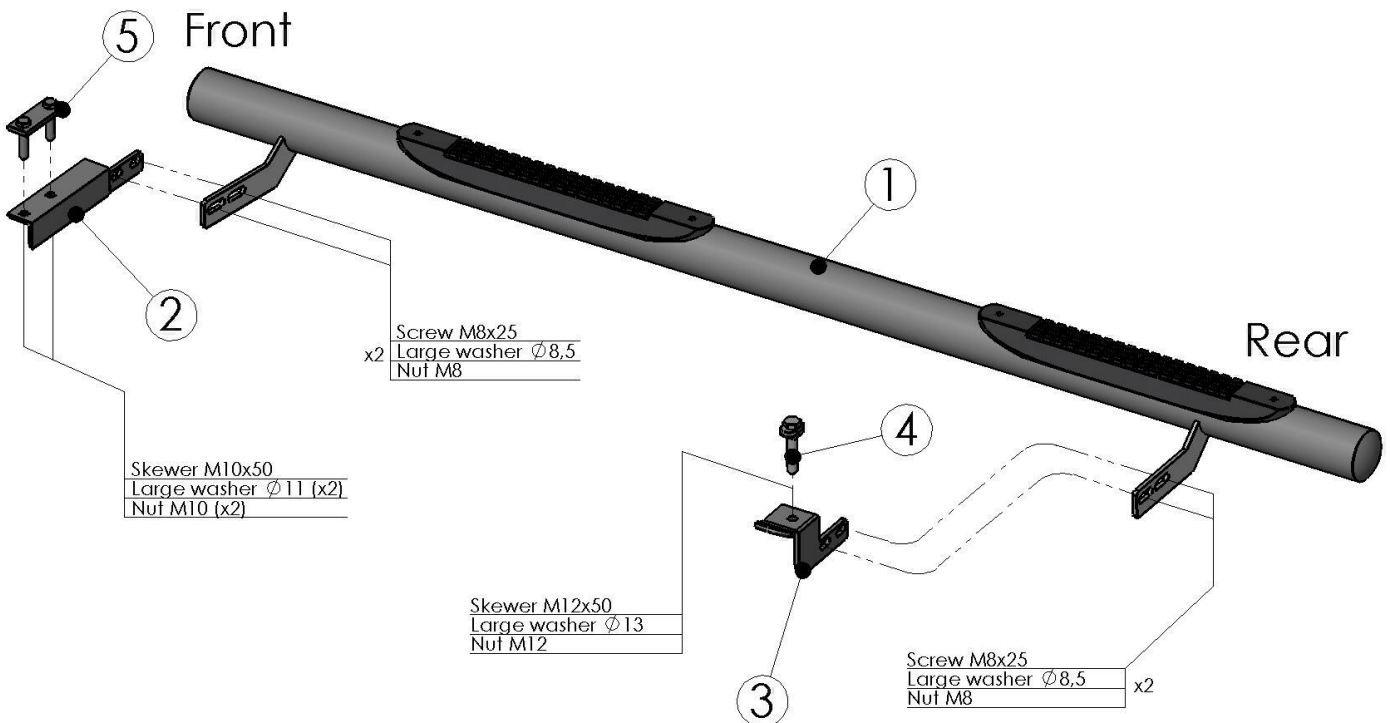
ASX-R1076-PR-01



Bullbar fitting:

(Left step fitting must be done in mirror reflection)

ASX-R1070-PR-02

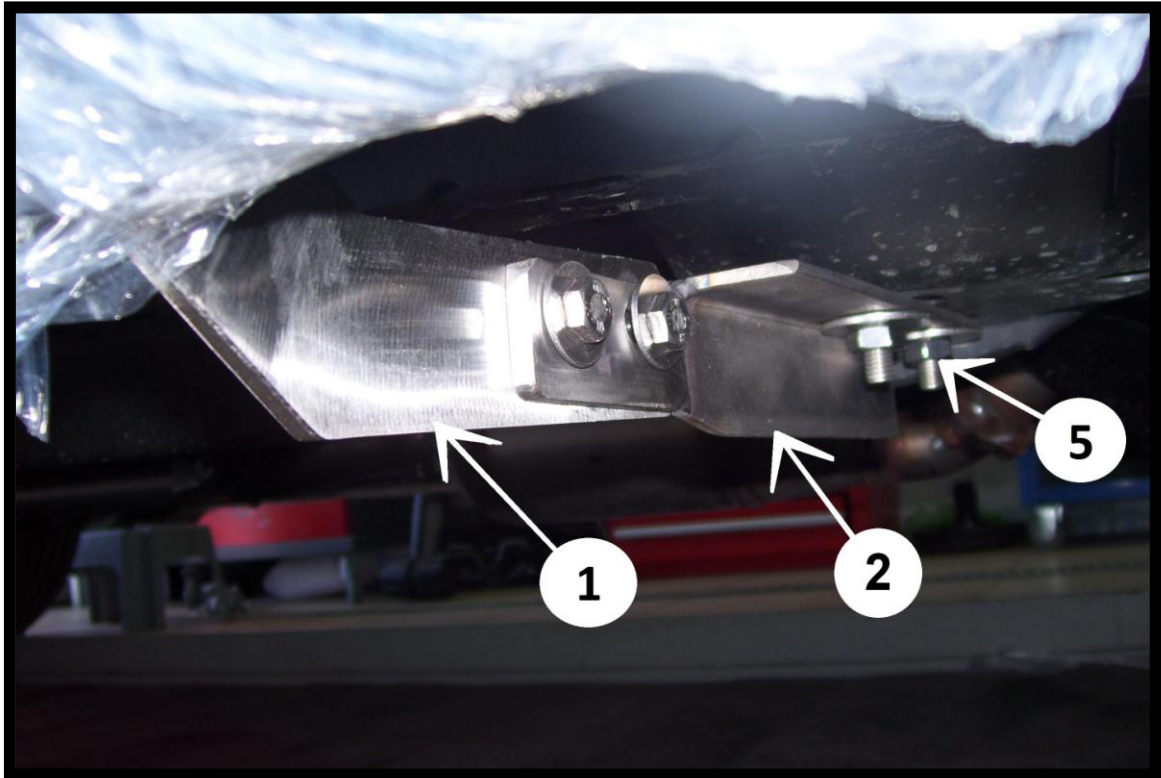




13
17
19

46 Nm

Front attachments:



Rear attachments:

