



STEELER

SOKÓŁKA

www.steeler.pl

MITSUBISHI OUTLANDER



INSTRUKCJA MONTAŻU

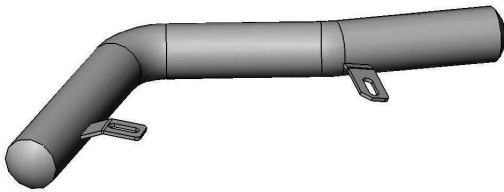
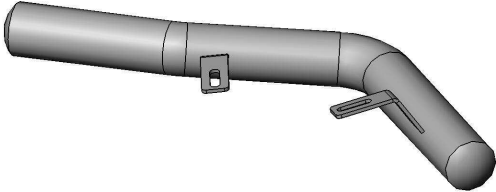
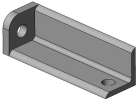
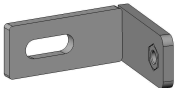
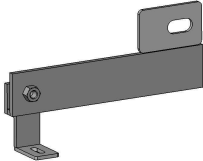
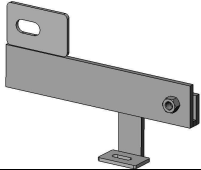
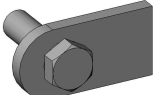
(Orurowanie tylne typu „hokej”)

OT-R0076-NR-02

Orurowania z homologacją „e”



Wykaz elementów orurowania :

1. Narożnik prawy (szt. 1)	2. Narożnik lewy (szt. 1)
	
3. Zamocowanie dolne I (szt. 1)	4. Zamocowanie dolne II (szt. 1)
	
5. Zamocowanie dolne III (szt. 1)	6. Zamocowanie dolne IV (szt. 1)
	
7. Szpilka M12x35(szt. 2)	
	

Wykaz elementów łącznych:

Śruby i szpilki:

M8x35- szt.6

M10x35- szt.2

M12x35- szt.2 (szpilka)

Podkładki:

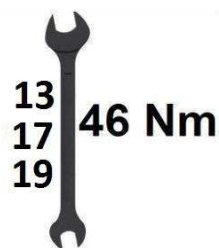
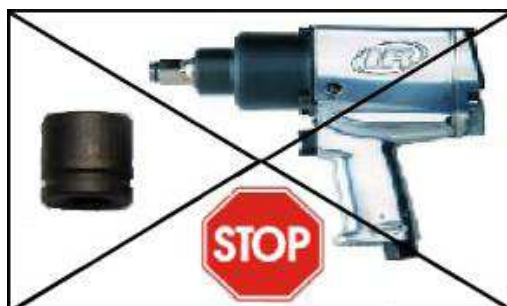
Ø 8,5- szt.11 (powiększona)

Ø 13- szt.2 (powiększona)

Nakrętki:

M8- szt.6

M12- szt.2



Czas montażu

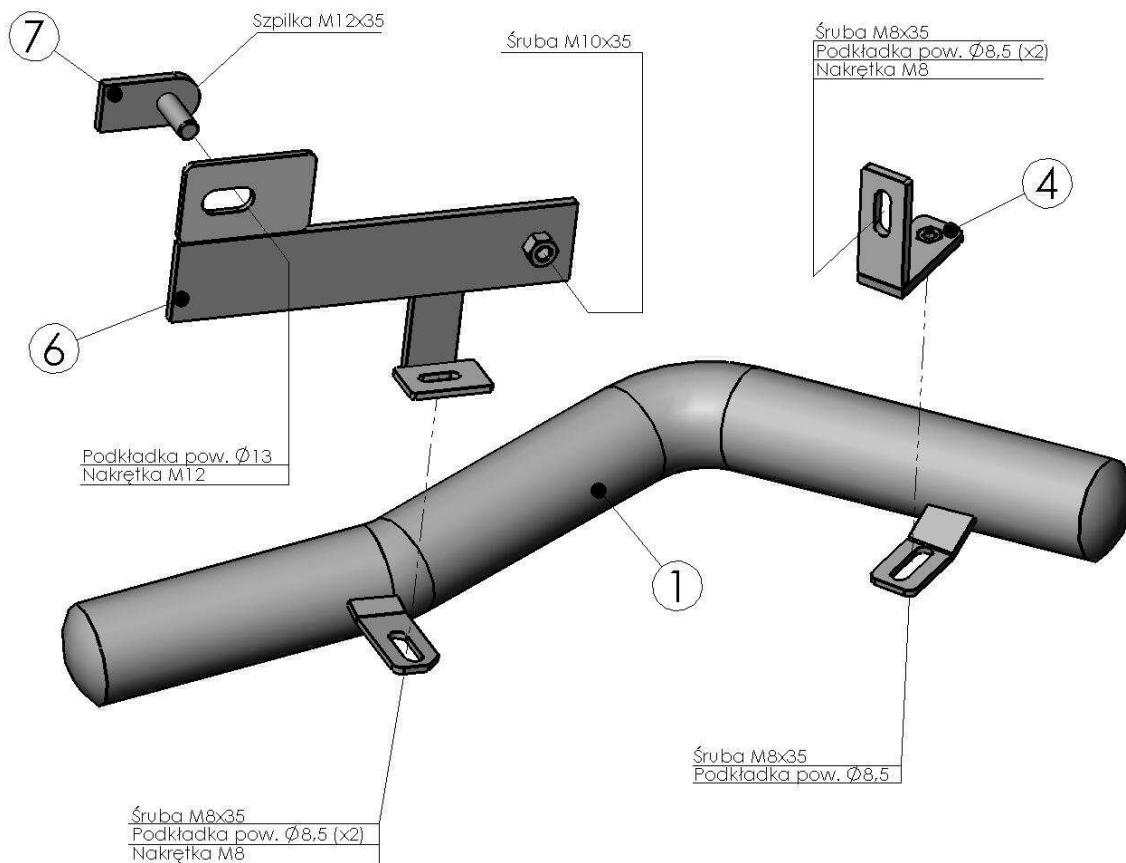


1 h

UWAGA: *Folię usunąć dopiero po montażu!*

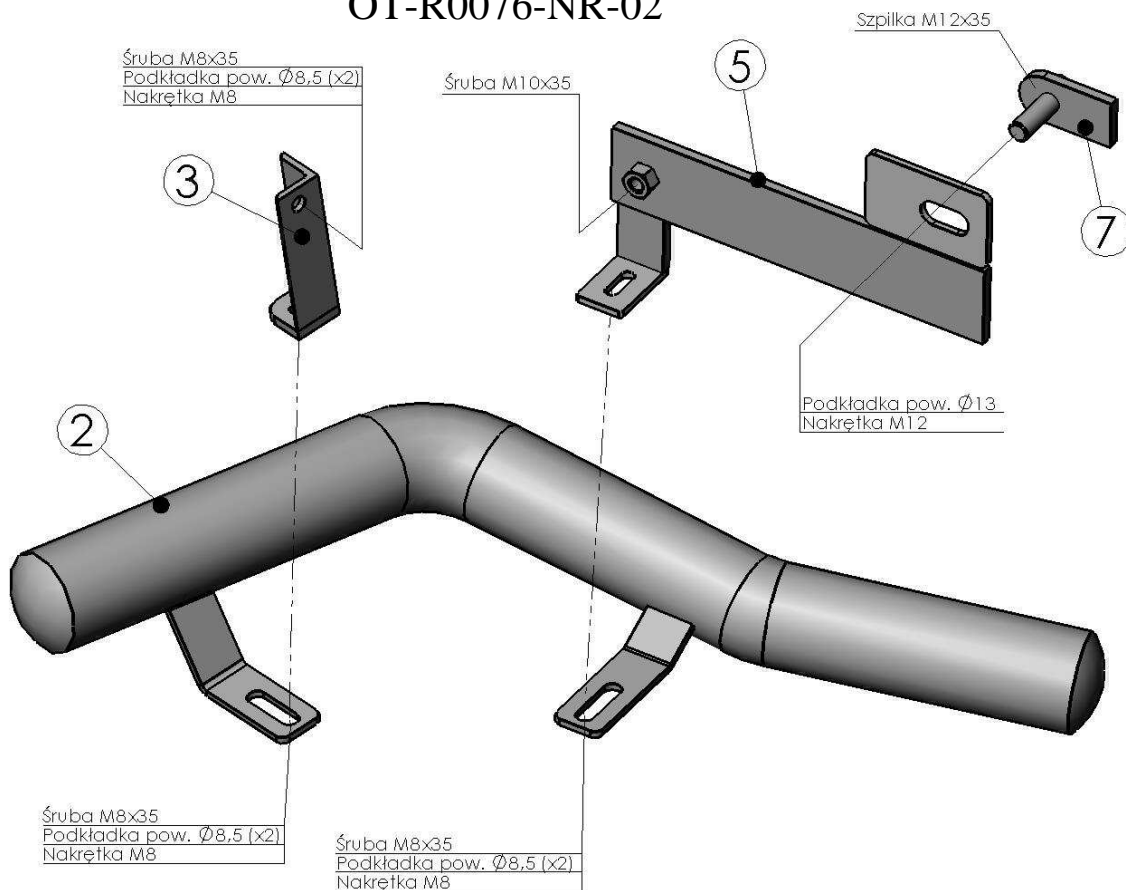
Montaż orurowania (narożnik prawy):

OT-R0076-NR-02

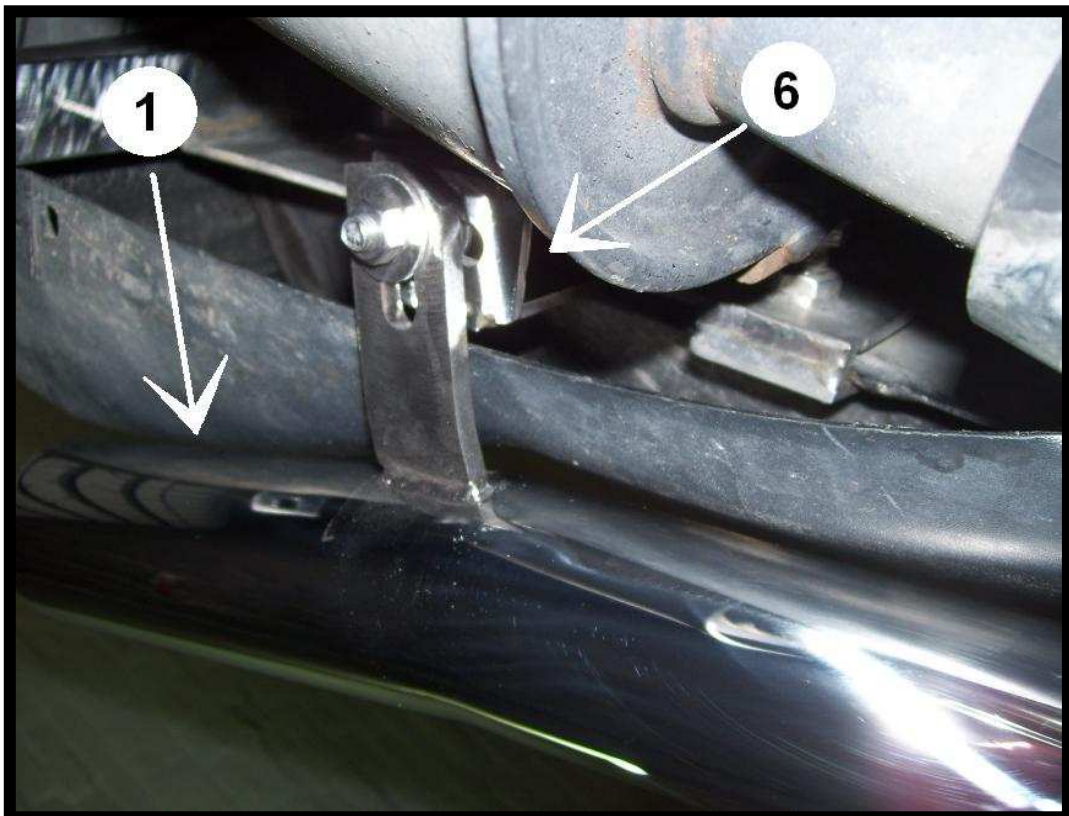
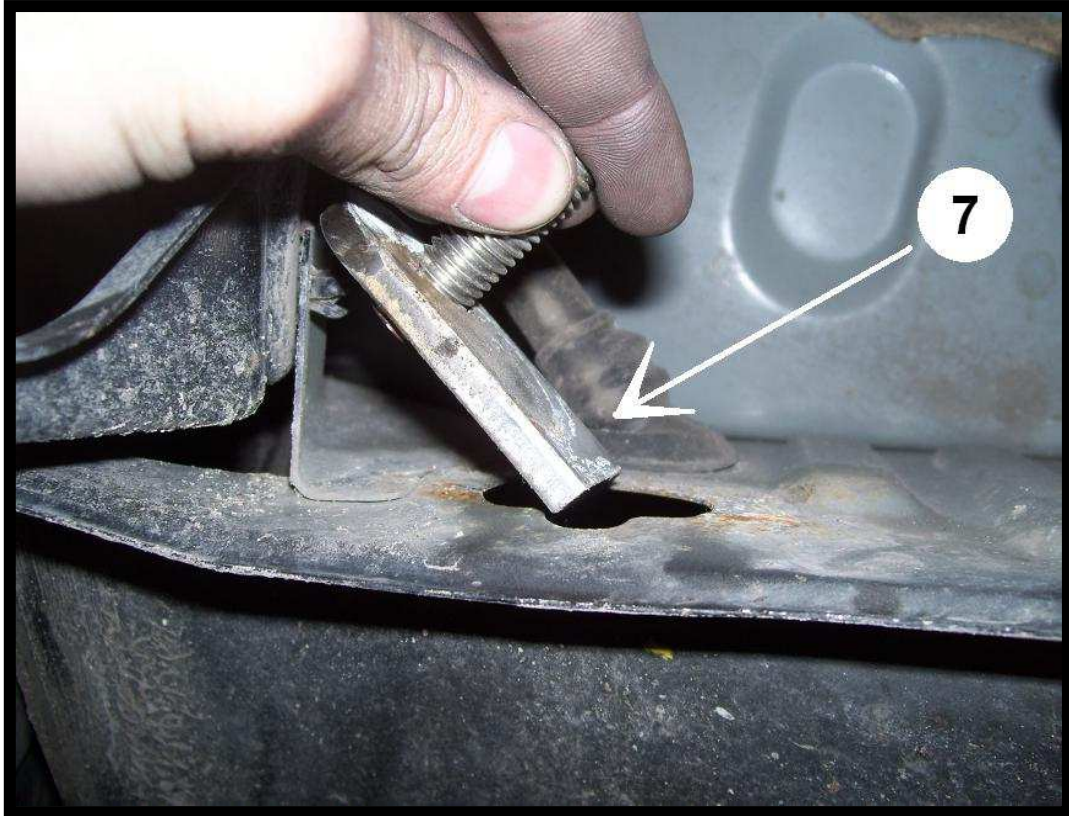
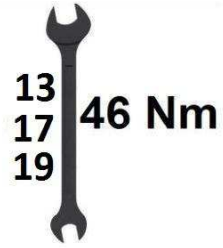


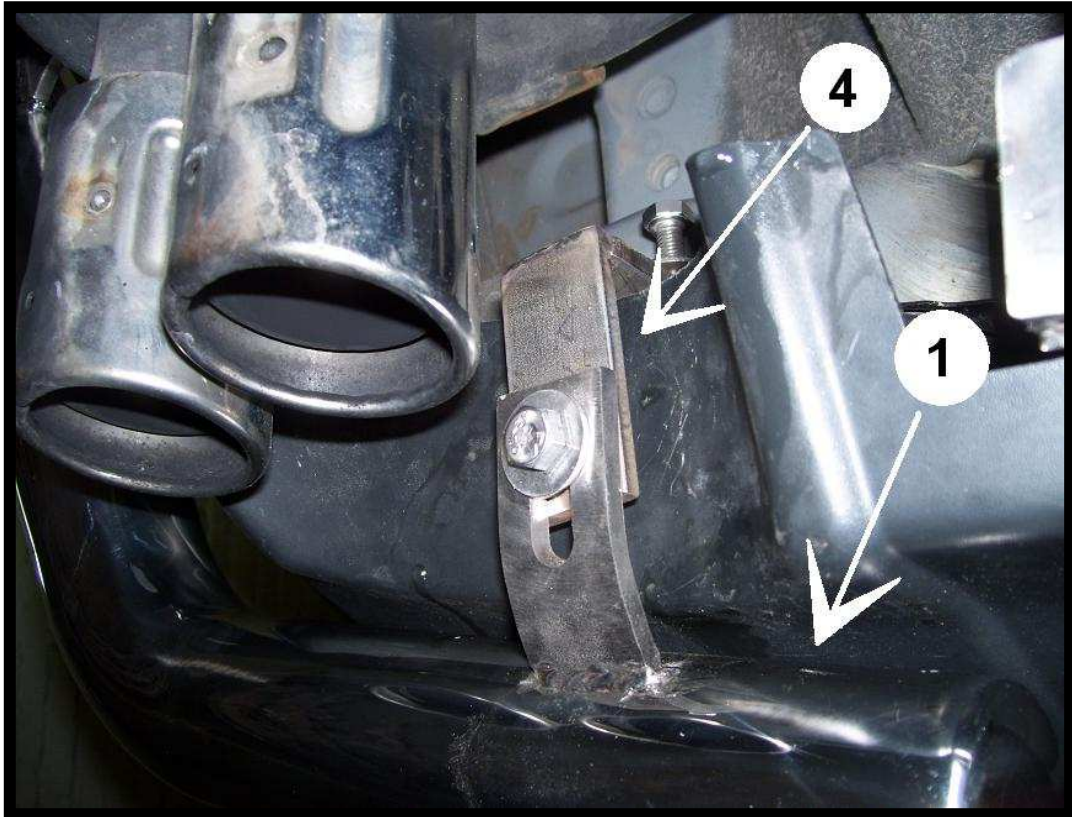
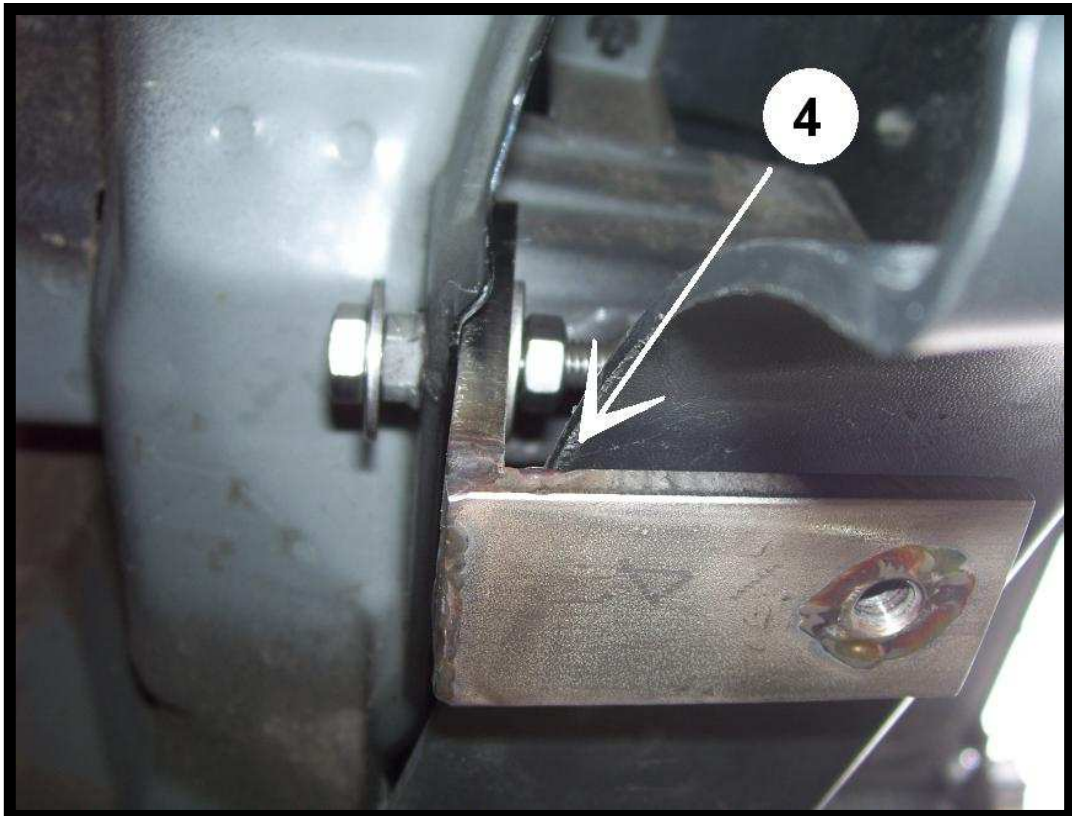
Montaż orurowania (narożnik lewy):

OT-R0076-NR-02



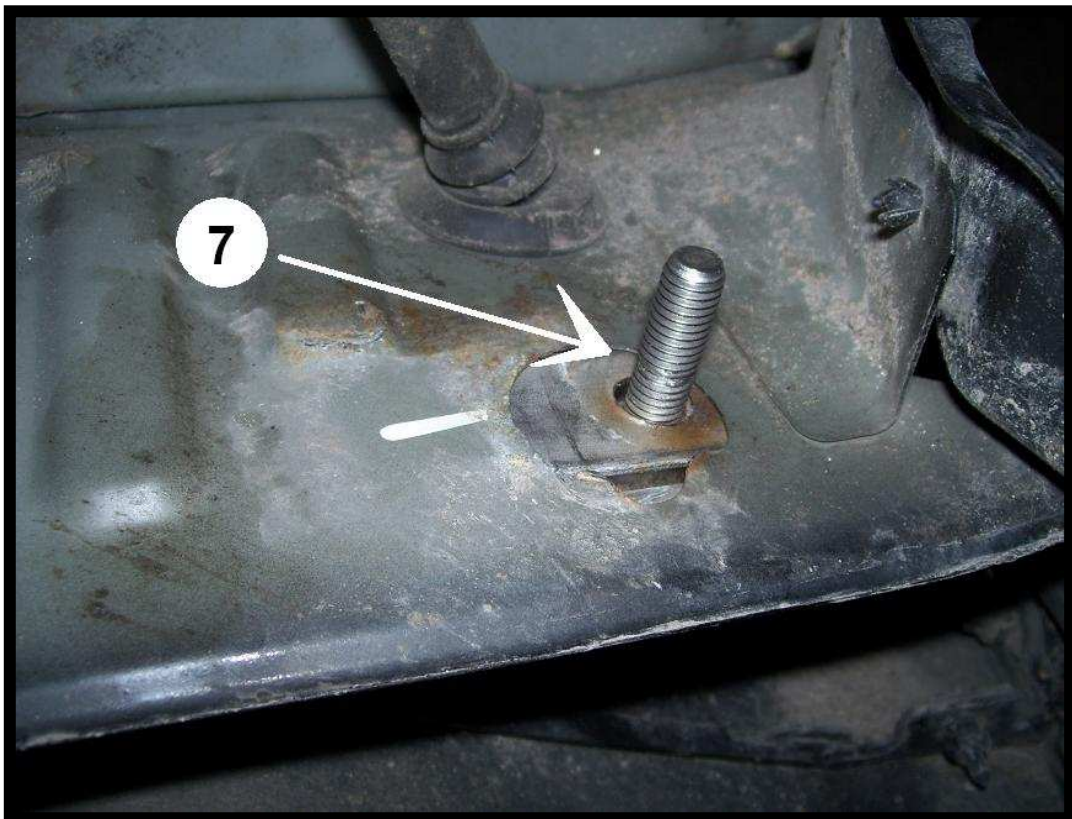
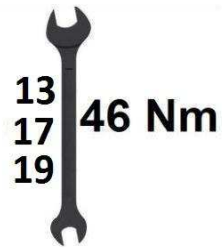
Prawy narożnik:

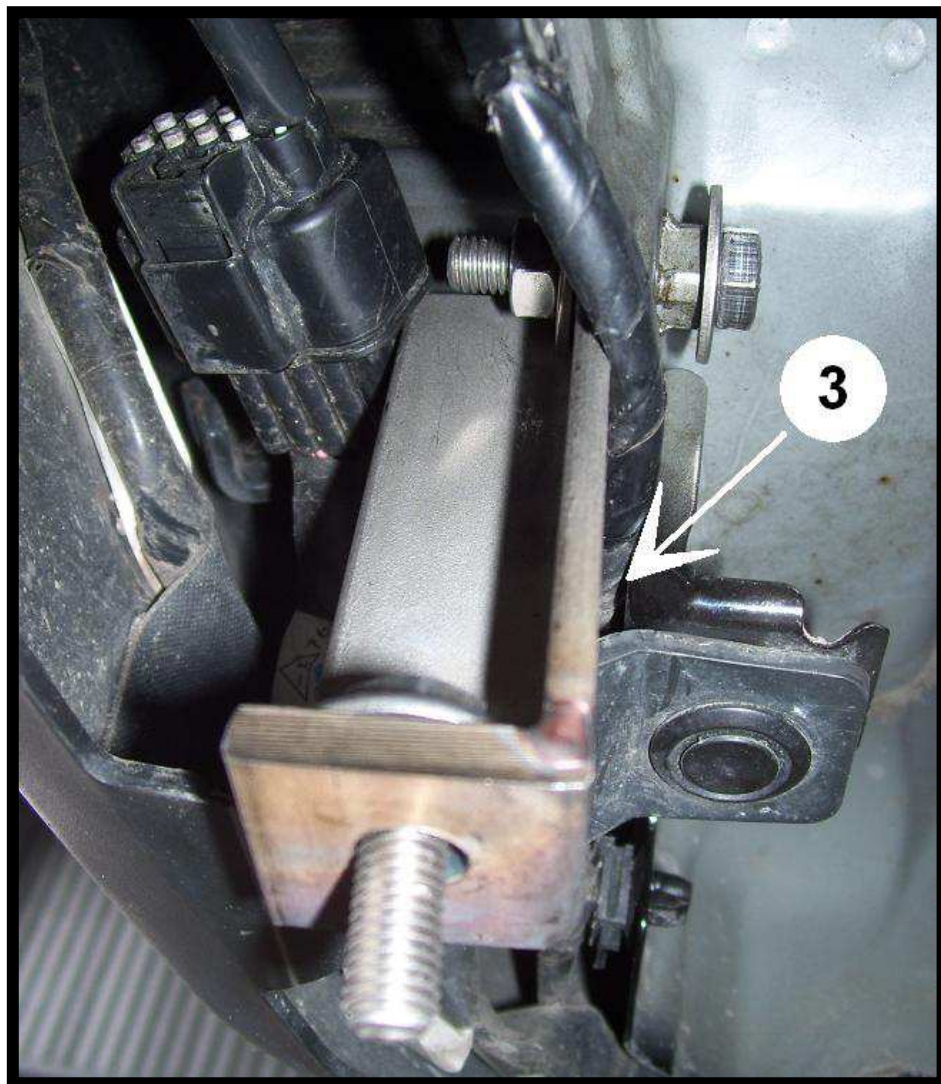
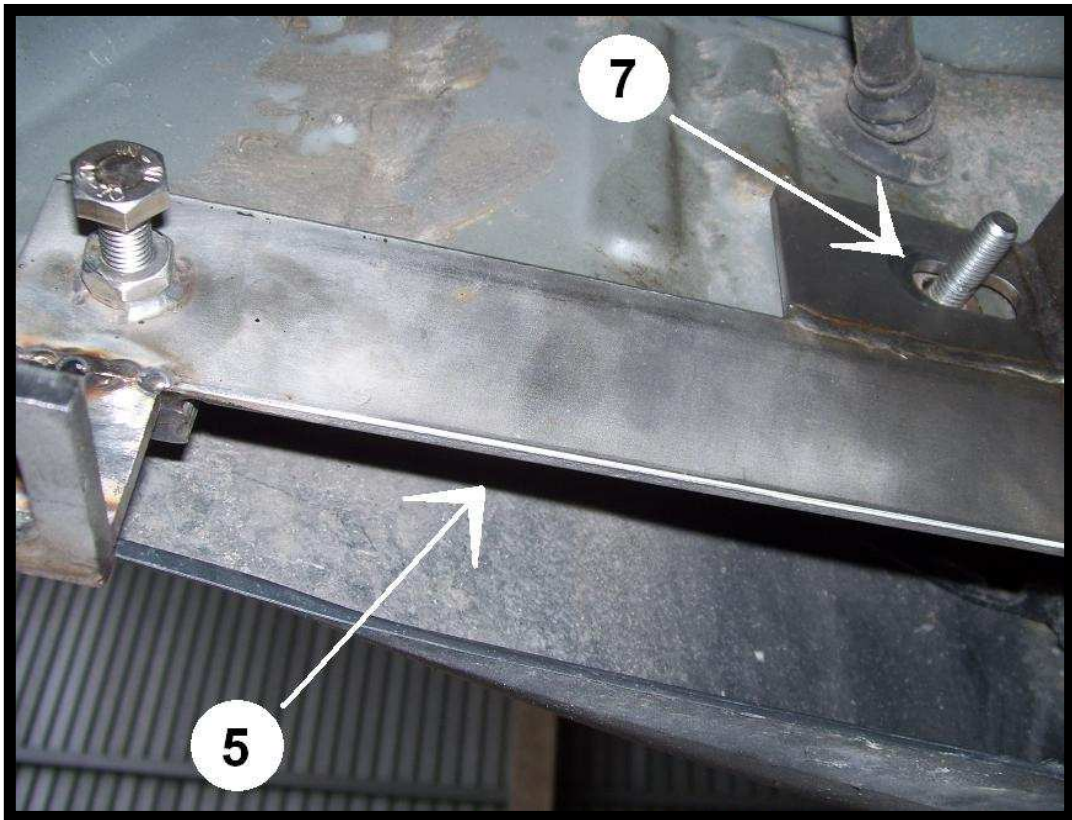


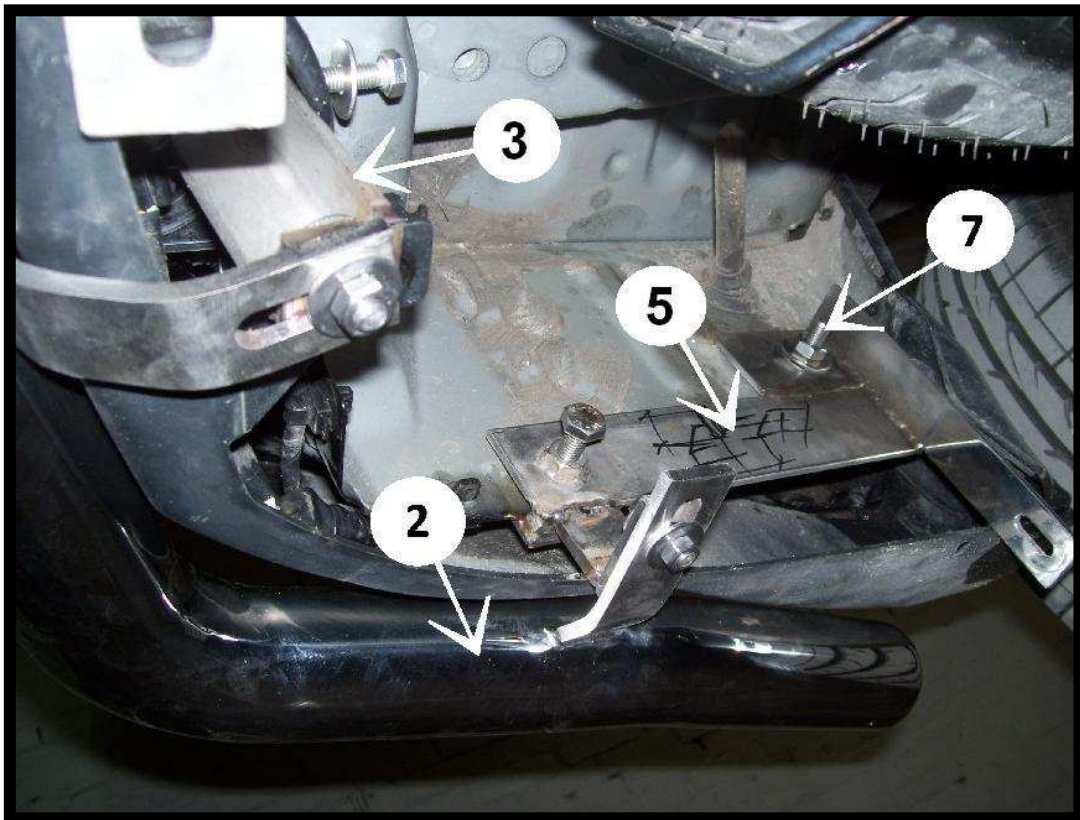
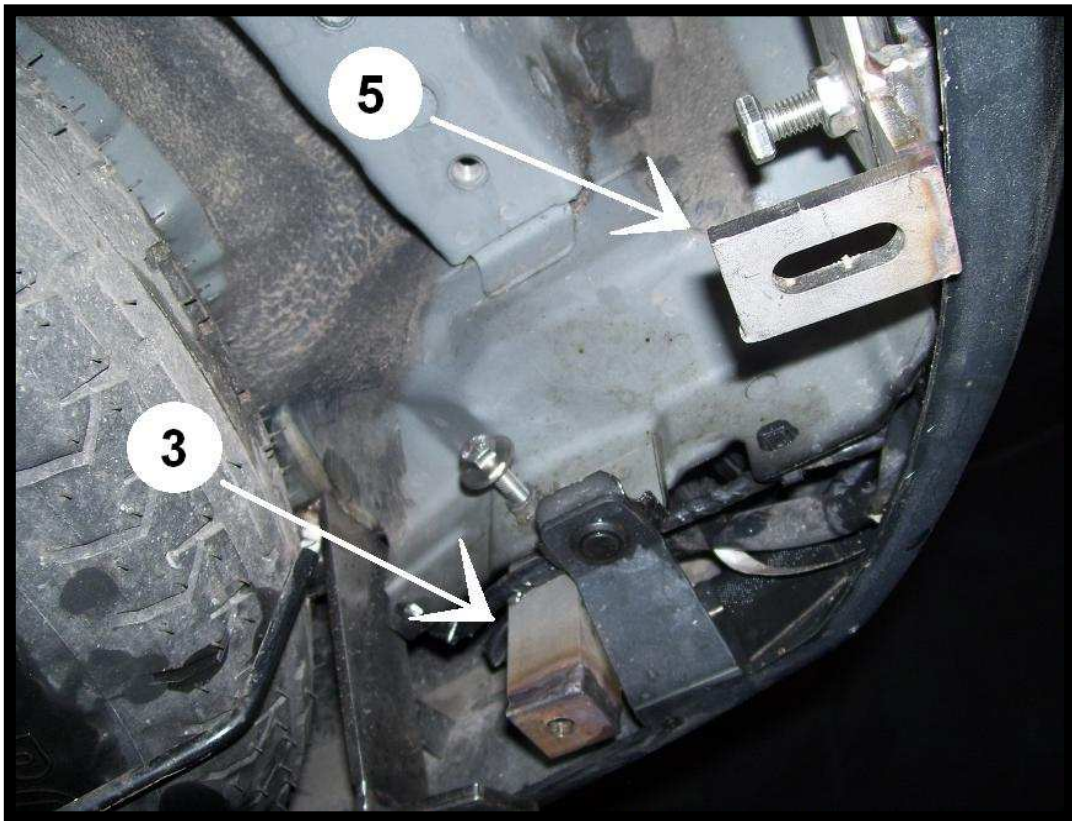




Lewy narożnik:







**NAROŻNIKI NALEŻY TAK WYREGULOWAĆ
ABY NIE DOTYKAŁY DO OTWARTEJ DOLNEJ
KLAPY BAGAŻNIKA !!!**